

# The Hunters Hill Art Exhibition

The Annual Hunters Hill Exhibition began in 1955, and is the longest continuously running exhibition in NSW. It attracts artworks from all over Australia and is a meeting point for emerging and professional artists alike.

The Exhibition encourages contemporary and traditional artworks to suit the diverse range of visitors who come from all over Sydney and NSW. It gives visitors the opportunity to purchase something unique.

The Hunters Hill Art Exhibition is selective and, as such, highly competitive. A panel of three judges work together over a weekend to carefully select works for the Exhibition. The judges determine Prizes and Awards.

Public awareness of the Exhibition has grown over the last few years and we now offer an increased number of prizes, categories, guided tours of the Exhibition and an "art-walk" to various venues in Hunters Hill. These additions have greatly increased number of visitors to the ten day event.

The Hunters Hill Art Exhibition is a prestigious and successful event in which to showcase your artwork.

**The Web Gallery**  
[www.huntershillarts.com](http://www.huntershillarts.com)

Council has created an Exhibition web gallery, which proved an instant success with many visits to the site during the Exhibition. The web gallery also continues to support artists throughout the year with high traffic to the site.

If selected, we will take a photo of your entry to be displayed on the web gallery.

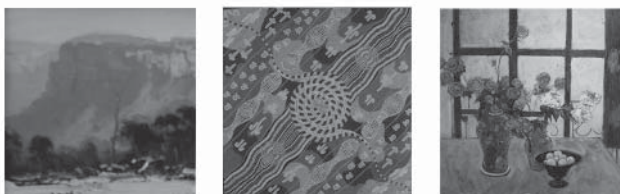


*Celebrating 150 years*

Entry Form & Payment to be sent to  
**Hunter's Hill Council**  
**PO Box 21**  
**Hunters Hill NSW 2110**  
or delivered to  
**Hunter's Hill Council**  
**22 Alexandra Street**  
**Hunters Hill NSW 2110**

**Opening Night**  
Hunters Hill Town Hall  
7pm Friday 13 May 2011  
Entry \$10

**Exhibition Times:**  
Daily 10am - 4pm.  
Saturday 14 May 2011 - Sunday 22 May 2011  
(Sunday 22 May 2011 Exhibition will close at 2pm)



Enquiries:  
02 9879 9449

[community@huntershill.nsw.gov.au](mailto:community@huntershill.nsw.gov.au)

[www.huntershillarts.com](http://www.huntershillarts.com)  
[www.huntershill.nsw.gov.au](http://www.huntershill.nsw.gov.au)

[www.huntershill150.com](http://www.huntershill150.com)

# The 57th Hunters Hill Art Exhibition 2011

## ENTRY FORM

To be returned by Friday 15th April

**13 May - 22 May**  
Hunters Hill Town Hall



Hunters Hill Council Art Prize	\$5,000
Regional Art Prize	\$1,000
Sculpture Prize (Non-Functional)	\$1,000
Sculpture Prize (Functional)	\$1,000
9" x 5" Prize	\$500
Nora Heysen Award	\$500
Sesquicentenary Prize (Acquisitive)	\$2,000
People's Choice Award	\$250

[huntershillarts.com](http://huntershillarts.com)

**Tax Invoice**

Hunters Hill Council  
22 Alexandra Street. Hunters Hill  
ABN: 75 570 316 011

# Entry Form

**Entry Fee \$25 (inclusive GST) per artwork**

Please complete all parts ( Artwork, Artist, GST, Payments, Declarations) of this Entry Form.

**One Entry Form is required for each artwork entered.**

## THE ARTWORK

Title of artwork: .....

### SECTION 1

Hunters Hill Art Prize (includes Regional & Nora Heysen Prizes for eligible artists)

Please tick (one only)

### SECTION 2

Sculpture Prize (non- functional)

### SECTION 3

Sculpture Prize (functional)

### SECTION 4

The 9"x5" Prize

### SECTION 5 (Acquisitive)

"Impressions of a Garden Suburb - Hunters Hill" for Regional artists only.

Medium: (e.g.watercolour, mixed-medium) .....

Art Work Dimensions: (metric) .....

Price of artwork: \$\_\_\_\_\_ (GST included if applicable)

*Artworks on front cover from 2010 Exhibition:*

- Jana Hunt - Meditation on St Peters
- Daniel Dominguez - SCG New Year's "Test"
- Gregory Coates - Awaiting
- Ida Laurence - Both
- Deborah Bennett - Madeline Street Garden

## THE ARTIST

Artist ID No.: .....  
(previous artists only, see your label back page)  
Title (Mr/Mrs/Ms/Other): .....

First Name: .....

Surname: .....

Gender: Male/Female (for Nora Heysen Award)

Address: .....

Suburb: .....

State: ..... Postcode: .....

Phone: .....

Mobile Phone: .....

Email: .....

Please tick (one only)

### G.S.T. STATUS

1. Yes I am registered for GST.
2. I am not registered for GST, but have an ABN
3. I am not a business entity and am not carrying on an enterprise. My artwork is the product of a hobby, carried on by me. I request that no withholding tax be deducted from amounts payable to me.

Signature: ..... Date: .....

A.B.N. (if applicable)

Please read and note all changes to:

- Terms and Conditions
- Sections - Prizes and Awards
- Notification of selected artwork
- Collection times and dates.

I am interested in volunteering for the exhibition.

## DECLARATIONS

- a) The artwork submitted by me for the Hunters Hill Art Exhibition is an original artwork, created by me within the last 12 months.
- b) I have read and understood the terms and conditions for the Hunters Hill Art Exhibition 2011 and will adhere to them.

Signature: .....

Date: .....

## PAYMENT

### Money Order/Cheque

I have enclosed a money order/cheque for \$.....

### Credit Card/Cash

Credit card and cash payments can ONLY be paid in person at Hunters Hill Council, by 4pm daily.

**Entry Forms and payment need to be received by Council no later than 4pm Friday 15th April.**

**OFFICE USE:**  
Amount Paid:  
Date:  
Receipt No.:  
ENTRY ID NO.:

# PRIZES & AWARDS

## Section 1

### **Hunters Hill Art Prize \$5000**

A painting, drawing or similar in any medium.  
*(Entries in Section 1 will automatically be eligible for:)*

### **Regional Art Prize \$1000**

Painting, drawing or similar from a resident of Hunters Hill, Lane Cove, Ryde & Canada Bay Municipalities.

### **Nora Heysen Award \$500 plus Weekend**

Only for female artists who are residents of Hunters Hill Municipality. The prize includes a weekend at *The Cedars, Hahndorf*, donated by Nora Heysen Foundation.

## Section 2

### **Sculpture Prize (Non-Functional) \$1000**

Non functional open to all mediums e.g. : glass, ceramic and woodwork.

## Section 3

### **Sculpture Prize (Functional) \$1000**

An art object open to medium such as glass, ceramics or woodwork.

## Section 4

### **9" x 5" Prize (Painted area) \$500**

*(Frame not to exceed 1800mm x 1500mm)*

## Section 5 (Acquisitive)

### **Hunters Hill Sesquicentenary Prize**

"Impressions of a Garden Suburb - Hunters Hill" (Regional Artists only) **\$2000**

### **People's Choice Award \$250**

# IMPORTANT DATES

## Entry

Entry Form and Payment due on 15 April 2011.  
No later than 4pm.

## Delivery

Delivery of entries to Town Hall:  
22 Alexandra Street Hunters Hill NSW 2110

Thursday 28 April 2011 10am - 7pm

Friday 29 April 2011 10am - 4pm

Saturday 30 April 2011 9am - 12 noon

*(No late entries will be permitted)*

## Judging

Saturday 30 April and Sunday 1 May 2011

## Notification

Selected entries ONLY will be listed on Council's web site from Wednesday 4 May 2011

Web site: [www.huntershill.nsw.gov.au](http://www.huntershill.nsw.gov.au)

## Collection of Artwork

### Unselected:

Monday 9 May 2011 10am - 3pm

Wednesday 11 May 2011 10am - 7pm

### Selected:

Sunday 22 May 2011 3pm - 6pm

Monday 23 May 2011 10am - 3pm

*(No early collection of entries will be permitted)*

# NEW THIS YEAR

## Section 1: Additional Prize

### Nora Heysen Award

In addition to the \$500 prize, this year to recognise Nora Heysen's Centenary, the Nora Heysen Foundation offers the recipient a weekend in Hahndorf, South Australia, to include:

- a weekend centred around The Cedars, the Hans Heysen Estate, Hahndorf, South Australia including transport and single accommodation
- a Personal Tour of the Estate, by the Curator Allan Campbell
- presentation of a copy of 'Nora Heysen, Light and Life', author Jane Hylton
- hosted dinner on Saturday night at a restaurant in Hahndorf.

## Section 5: Acquisitive Prize

### "Impressions of a Garden Suburb - Hunters Hill"

This year Hunters Hill Council is celebrating the 150th anniversary of the founding of the Municipality. Hunters Hill is known as the "Garden Suburb" and to celebrate this special event a \$2,000 acquisitive prize has been included in the Exhibition.

The artwork can be in any medium and must be an artistic impression of the Hunters Hill Municipality from a resident of Hunters Hill, Lane Cove, Ryde & Canada Bay Municipalities. The artwork will be kept by Council and displayed in the Hunters Hill Town Hall as an ongoing legacy of the Sesquicentenary.

### PLEASE NOTE:

All Artists entering artwork in the Exhibition are warmly invited to attend the Opening Night held at Hunters Hill Town Hall, 7pm, Friday 13 May 2011. Entry \$10.

Exhibition Times: Daily 10am - 4pm.  
Saturday 14 May - Sunday 22 May, 2011

## Conditions of Entry

- **Entry Fee.** Each entry must be accompanied by the appropriate fee. Art & Sculpture \$25.00 per piece (incl.GST). Entry fees are non refundable. No exceptions will be made.
- **Commission.** A 25% fee will be charged by the Committee on all sales. This commission contributes to the cost of running the Exhibition. Should GST apply to the sale of your artwork, please ensure it is included in the total selling price.
- **Sale.** All entries must be for sale.
- **Framing.** All paintings must be dry, framed or professionally presented, wired and ready for hanging with no projections on the canvas that could cause damage to other works.  
**Frames or hanging devices requiring repair work will be rejected.**
- **Section 5 (Acquisitive) for 1 year only.**  
**The Hunters Hill Sesquicentenary Prize “Impressions of a Garden Suburb” is acquisitive. The winning artwork will be kept and displayed by Hunters Hill Council.**
- **Numbers of Entries per Section.**  
Sections 1, 4 & 5: Maximum 3 entries.  
Sections 2 & 3: Maximum 4 entries.
- **Original.** All entries must be the original work of the exhibitor and completed within the last twelve months.
- **Size.** Section 1 & 4. Hanging works not to exceed 1800mm (6ft) by 1500mm (5ft). This also includes a total area of 1800 x 1500 for multiple piece works (triptychs & diptychs).

- **Size (cont'd).**

Triptychs & Diptychs artwork must be attached as if one piece of artwork.

- **Weight.** A weight restriction of 15kg will be placed on hanging art works, and 50kg on sculpture (ceramics). Movement/positioning of Sculpture over 20kg is the responsibility of the Artist. Artist must be available for positioning artwork prior to Opening.

- **Judging.** All entries will be viewed and selected by the Judges. No entry fees will be refunded for unselected work.

The work selected by the Judges is final, no correspondence will be entered into. If, in the opinion of the Judges, no entry in any section is deemed worthy, the Committee may refrain from making an award.

- **Finding out if artwork has been Selected.** Do not phone Council to find out if your work has been selected. A list of **Selected Works** will appear on Council’s website from 4 May 2011. ([www.huntershill.nsw.gov.au](http://www.huntershill.nsw.gov.au)). If your artwork is not on the Selected list then it has not been selected.

- **Collection Arrangements.** All necessary arrangements to be made by the exhibitor, including if using a courier. Collection must be made by the specific date due to the lack of storage space. Any uncollected entries, after the due date, will incur a charge of \$5 per day or part thereof and will be disposed of after a 4 week period. All artwork on exhibition **CANNOT** be collected until 3pm on the last day of the Exhibition. No early collections will be permitted.

- **Insurance.** This is the responsibility of the exhibitor. The Council accepts no responsibility for loss, theft or damage.

- **Copyright.** Hunter’s Hill Council reserve the right to photograph works exhibited in the Hunters Hill Art Exhibition for the purpose of documentation and promotion. All necessary acknowledgements of authorship will be duly made.

- **Refusal of Entry.** The Committee reserves the right to refuse any entry, as well as any entry which is inadequately prepared for display. Craft & Photography excluded from selection.

- **Interpretation of Conditions.** In the event of a dispute regarding the interpretation of the Conditions of Entry, the decision of the Committee shall be binding.

- **Entry Forms.** A separate entry form **MUST** be completed for each artwork. Additional forms can be obtained by copying the original form or from Council’s website [www.huntershill.nsw.gov.au](http://www.huntershill.nsw.gov.au).

- **Delivery.** Deliver artwork to Hunters Hill Town Hall, 22 Alexandra Street, Hunters Hill. Works sent by freight/courier must be paid for. All works must be correctly packaged, and packaging should be of a quality to allow for re-use and the safe return of works. Return freight/courier/post stickers must be included.

**NOTE:** Due to the hazards associated with breakages, entries will not be accepted from Australia Post.